

Build-A-Field Trip

A DIVISION OF FLORIDA SAFARI ADVENTURES

2 DAY TRIP - TRAVELING THROUGH TIME

4th - 12th Grade **St. Augustine History and Culture**

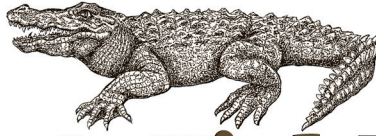


- **History of St. Augustine**
- **Old Florida Museum**
- **Ghost and Gravestone Tour**
- **Castillo de San Marco**
- **Spanish Quarter**



CALL **954-772-7800** or E-MAIL info@BuildAFieldtrip.com

1925 NE 45th Street, Ste. 132, Fort Lauderdale, FL 33308



Build-A-Field Trip

A DIVISION OF FLORIDA SAFARI ADVENTURES

2 DAY TRIP - TRAVELING THROUGH TIME

4th - 12th Grade **St. Augustine History and Culture**

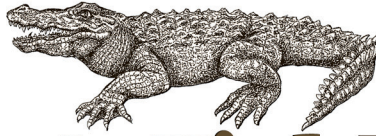
We'll explore the cobbled streets and feel the history of old Florida on our 2-day adventure through beautiful St. Augustine. The old village is our first destination- the tour giving us a real sense of the layers of rich history here. A trolley will carry us to places of great significance, including the old church and old jail. The Florida Heritage Museum provides a moment for closer study before we head back to the trolleys for a Ghost and Gravestone Tour! The next day provides an opportunity to visit the unique coquina limestone walls of the famous Castillo de San Marco. After a tour of this magnificent fort, we're off to explore the oldest school and the Spanish Quarter Living History Museum, seeing how everyday people lived so long ago. Add a visit to the lighthouse or the famed Ripley's Believe It or Not Museum and your students will have much to discuss and remember of this historic place on their homeward journey!

PRICING:

- **\$240.00 per student**
- **Based on a minimum of 36 students and a maximum of 42 students**
- **Based on Broward county departure.**
- **Includes coach transportation, instruction, equipment, lodging and meals,**
- **Seasonal rates apply**

CALL **954-772-7800** or E-MAIL info@BuildAFieldtrip.com

1925 NE 45th Street, Ste. 132, Fort Lauderdale, FL 33308



Build-A-Field Trip

A DIVISION OF FLORIDA SAFARI ADVENTURES

2 DAY TRIP - TRAVELING THROUGH TIME

EDUCATIONAL OBJECTIVES

Sunshine State Standards following Grades 4-12

Students will:

-appreciate the significance of the Spanish contribution to the settlement of St. Augustine and its current place in Florida history and economics

SS.4.A.8.4 Explain how tourism affects Florida's economy and growth.

SS.4.C.2.2 Identify ways citizens work together to influence government and help solve community and state problems.

SS.4.E.1.2 Explain Florida's role in the national and international economy and conditions that attract businesses to the state.

SS.5.C.2.5 Identify ways good citizens go beyond basic civic and political responsibilities to improve government and society.

SS.6.W.1.5: Describe the roles of historians and recognize varying historical interpretations (historiography).

SS.6.W.1.6: Describe how history transmits culture and heritage and provides models of human character.

-explore the elements of St. Augustine that contributes to its unique character and significance in terms of Florida and American history

SS.7.G.2.3: Explain how major physical characteristics, natural resources, climate, and absolute and relative location have influenced settlement, economies, and inter-governmental relations in North America.

SS.8.G.2.2: Use geographic terms and tools to analyze case studies of regional issues in different parts of the United States that have had critical economic, physical, or political ramifications.

SS.8.G.3.1: Locate and describe in geographic terms the major ecosystems of the United States.

SS.8.G.2.1 Identify the physical elements and the human elements that define and differentiate regions as relevant to American history.

SS.912.G.2.1: Identify the physical characteristics and the human characteristics that define and differentiate regions.

SS.912.G.4.5: Use geographic terms and tools to analyze case studies of the development, growth, and changing nature of cities and urban centers.

-connect historical events with specific geographic locations, with a focus on Florida history

SS.5.E.2.1 Recognize the positive and negative effects of voluntary trade among Native Americans, European explorers, and colonists.

SS.6.W.1.1: Use timelines to identify chronological order of historical events.

SS.7.G.2.3 Explain how major physical characteristics, natural resources, climate, and absolute and relative location have influenced settlement, economies, and inter-governmental relations in North America.

SS.8.G.5.1: Describe human dependence on the physical environment and natural resources to satisfy basic needs in local environments in the United States.

SS.8.A.2.5 Discuss the impact of colonial settlement on Native American populations.

SS.912.G.5.4: Analyze case studies of how humans impact the diversity and productivity of ecosystems.

SS.912.G.2.4: Use geographic terms and tools to analyze case studies of how selected regions change over time.

-understand and appreciate the significance of preserved heritage memorabilia

SS.8.G.2.1: Identify the physical elements and the human elements that define and differentiate regions as relevant to American history.

SS.8.E.2.1: Analyze contributions of entrepreneurs, inventors, and other key individuals from various gender, social, and ethnic backgrounds in the development of the United States economy.

SS.8.E.2.3: Assess the role of Africans and other minority groups in the economic development of the United States.

SS.8.G.5.2: Describe the impact of human modifications on the physical environment and ecosystems of the United States throughout history.

SS.912.W.1.6: Evaluate the role of history in shaping identity and character.

-understand the intersection between history, art and architecture through the study of historic buildings

SS.8.G.6.2: Illustrate places and events in U.S. history through the use of narratives and graphic representations.

SS.912.G.6.4: Translate narratives about places and events into graphic representations.

SS.912.H.1.1: Relate works in the arts (architecture, dance, music, theatre, and visual arts) of varying styles and genre according to the periods in which they were created.

SS.912.H.1.2: Describe how historical events, social context, and culture impact forms, techniques, and purposes of works in the arts, including the relationship between a government and its citizens.

SS.912.H.1.5: Examine artistic response to social issues and new ideas in various cultures.

SS.912.H.3.2: Identify social, moral, ethical, religious, and legal issues arising from technological and scientific developments, and examine their influence on works of arts within a culture.

CALL **954-772-7800** or E-MAIL **info@BuildAFieldtrip.com**

1925 NE 45th Street, Ste. 132, Fort Lauderdale, FL 33308