

Build-A-Field Trip

A DIVISION OF FLORIDA SAFARI ADVENTURES

3 DAY TRIP - FLORIDA SPRINGS MANATEE SAFARI

5th - 12th Grade **Swim with the Manatees and Hydrology of Florida Springs**



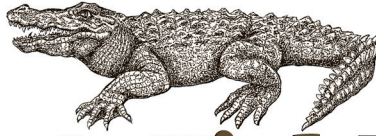
- **Marine Biology at Mote Aquarium**
- **Study Hydrology of Florida**
- **Swim with Manatee's in Crystal River**
- **Snorkel the Rainbow River**



- **Explore Homasassa Springs Wildlife Park**
- **Record data in Journals**

CALL **954-772-7800** or E-MAIL info@BuildAFieldtrip.com

1925 NE 45th Street, Ste. 132, Fort Lauderdale, FL 33308



Build-A-Field Trip

A DIVISION OF FLORIDA SAFARI ADVENTURES

3 DAY TRIP - FLORIDA SPRINGS MANATEE SAFARI

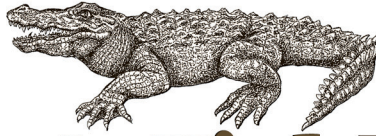
5th - 12th Grade **Swim with the Manatees and Hydrology of Florida Springs**

Join us as we head west along Alligator Alley to Mote Marine Laboratory in Sarasota. Explore the research center and exhibits, as we begin to learn about the marine environment and take a behind the scenes tour, learning about this valuable ocean research. Next we'll make a stop at the Pelican Bird Man Sanctuary to observe the rehabilitation facility of many native and exotic birds, before we depart for Crystal River. Before arriving at the Marine Science Station, we'll stop at the dive shop to fit our wetsuits and snorkel gear for our early morning snorkeling adventure. Prepared, we arrive at the Marine Science Station, check in to the bunk bed style dormitory and get ready for dinner. Evening activities include our Native American campfire and ever-popular spirit creature game. It's early to bed to store our energy for our exciting underwater encounter with the manatees!

After a hearty breakfast, we depart for the dive boat. While snorkeling, we explore the Crystal River National Wildlife Refuge and the many springs that provide "winter homes" for the manatees. Manatees, like humans are susceptible to cold and hypothermia and cannot survive for extended periods when water temperatures fall below 68 degrees Fahrenheit; the water in the springs is a constant 72 degrees Fahrenheit providing a warm water escape from the cold gulf waters. (All participants snorkeling with manatees will be suited with a complete wetsuit). After our snorkeling trip we return to Marine Science station where naturalists share valuable information about the pollutants in this important spring system. For our next adventure, we board a boat, grab our snorkel gear and begin our drift snorkel along the Rainbow River. We explore the local flora and fauna, discuss river ecology, estuary ecology, bird watch and manatee watch as we float along reveling in this unique river experience. After we return, we drive to the local "Manatee Toy Company" dedicated to protecting the endangered West Indian Manatee for some manatee souvenir shopping. Our full day comes to a beautiful close as we visit a local beach to collect shells and watch the sunset over the Gulf of Mexico, returning to the Marine Science station for dinner and a well-deserved rest.

CALL **954-772-7800** or E-MAIL info@BuildAFieldtrip.com

1925 NE 45th Street, Ste. 132, Fort Lauderdale, FL 33308



Build-A-Field Trip

A DIVISION OF FLORIDA SAFARI ADVENTURES

3 DAY TRIP - FLORIDA SPRINGS MANATEE SAFARI

5th - 12th Grade **Swim with the Manatees and Hydrology of Florida Springs**

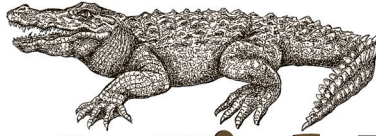
The morning finds us traveling to Homosassa Springs State Wildlife Park which offers a showcase of native Florida wildlife and endangered species. The park also serves as a rehabilitation center and refuge for endangered West Indian manatees that have been orphaned, injured in the wild and for manatees that have been born in captivity. The natural spring environment allows them an opportunity to re-acclimate themselves to a more natural environment before they are returned to the wild. Here we'll enjoy a picnic lunch and then depart for home with a new appreciation for this gentle and endangered mammal.

PRICING:

- **\$375.00 per student**
- **Based on a minimum of 36 students and a maximum of 48 students**
- **Based on Broward county departure**
- **Includes coach transportation, instruction, equipment, lodging and meals**

CALL **954-772-7800** or E-MAIL info@BuildAFieldtrip.com

1925 NE 45th Street, Ste. 132, Fort Lauderdale, FL 33308



Build-A-Field Trip

A DIVISION OF FLORIDA SAFARI ADVENTURES

3 DAY TRIP - FLORIDA SPRINGS MANATEE SAFARI

EDUCATIONAL OBJECTIVES

Sunshine State Standards following Grades 5-12

Students will:

-appreciate the significance of the Spanish contribution to the settlement of St. Augustine and its current place in Florida history and economics

SS.4.A.8.4 Explain how tourism affects Florida's economy and growth.

SS.4.C.2.2 Identify ways citizens work together to influence government and help solve community and state problems.

SS.4.E.1.2 Explain Florida's role in the national and international economy and conditions that attract businesses to the state.

SS.5.C.2.5 Identify ways good citizens go beyond basic civic and political responsibilities to improve government and society.

SS.6.W.1.5: Describe the roles of historians and recognize varying historical interpretations (historiography).

SS.6.W.1.6: Describe how history transmits culture and heritage and provides models of human character.

-explore the elements of St. Augustine that contributes to its unique character and significance in terms of Florida and American history

SS.7.G.2.3: Explain how major physical characteristics, natural resources, climate, and absolute and relative location have influenced settlement, economies, and inter-governmental relations in North America.

SS.8.G.2.2: Use geographic terms and tools to analyze case studies of regional issues in different parts of the United States that have had critical economic, physical, or political ramifications.

SS.8.G.3.1: Locate and describe in geographic terms the major ecosystems of the United States.

SS.8.G.2.1 Identify the physical elements and the human elements that define and differentiate regions as relevant to American history.

SS.912.G.2.1: Identify the physical characteristics and the human characteristics that define and differentiate regions.

SS.912.G.4.5: Use geographic terms and tools to analyze case studies of the development, growth, and changing nature of cities and urban centers.

-connect historical events with specific geographic locations, with a focus on Florida history

SS.5.E.2.1 Recognize the positive and negative effects of voluntary trade among Native Americans, European explorers, and colonists.

SS.6.W.1.1: Use timelines to identify chronological order of historical events.

SS.7.G.2.3 Explain how major physical characteristics, natural resources, climate, and absolute and relative location have influenced settlement, economies, and inter-governmental relations in North America.

SS.8.G.5.1: Describe human dependence on the physical environment and natural resources to satisfy basic needs in local environments in the United States.

SS.8.A.2.5 Discuss the impact of colonial settlement on Native American populations.

SS.912.G.5.4: Analyze case studies of how humans impact the diversity and productivity of ecosystems.

SS.912.G.2.4: Use geographic terms and tools to analyze case studies of how selected regions change over time.

-understand and appreciate the significance of preserved heritage memorabilia

SS.8.G.2.1: Identify the physical elements and the human elements that define and differentiate regions as relevant to American history.

SS.8.E.2.1: Analyze contributions of entrepreneurs, inventors, and other key individuals from various gender, social, and ethnic backgrounds in the development of the United States economy.

SS.8.E.2.3: Assess the role of Africans and other minority groups in the economic development of the United States.

SS.8.G.5.2: Describe the impact of human modifications on the physical environment and ecosystems of the United States throughout history.

SS.912.W.1.6: Evaluate the role of history in shaping identity and character.

-understand the intersection between history, art and architecture through the study of historic buildings

SS.8.G.6.2: Illustrate places and events in U.S. history through the use of narratives and graphic representations.

SS.912.G.6.4: Translate narratives about places and events into graphic representations.

SS.912.H.1.1: Relate works in the arts (architecture, dance, music, theatre, and visual arts) of varying styles and genre according to the periods in which they were created.

SS.912.H.1.2: Describe how historical events, social context, and culture impact forms, techniques, and purposes of works in the arts, including the relationship between a government and its citizens.

SS.912.H.1.5: Examine artistic response to social issues and new ideas in various cultures.

SS.912.H.3.2: Identify social, moral, ethical, religious, and legal issues arising from technological and scientific developments, and examine their influence on works of arts within a culture.

CALL **954-772-7800** or E-MAIL **info@BuildAFieldtrip.com**

1925 NE 45th Street, Ste. 132, Fort Lauderdale, FL 33308