

Build-A-Field Trip

A DIVISION OF FLORIDA SAFARI ADVENTURES

3 DAY TRIP - SOUTHERN SITES OF SAVANNAH

5th - 12th Grade **History of Savannah**

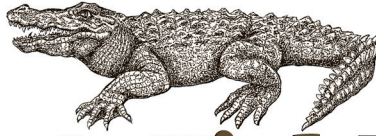


- **Jepson Center for the Arts**
- **Historic Owens-Thompson House**
- **Trolley Tour of the City**
- **Savannah History Museum**
- **Davenport House Museum**
- **Old Fort Jackson Tour**
- **Roundhouse Railroad Museum**



CALL **954-772-7800** or E-MAIL info@BuildAFieldtrip.com

1925 NE 45th Street, Ste. 132, Fort Lauderdale, FL 33308



Build-A-Field Trip

A DIVISION OF FLORIDA SAFARI ADVENTURES

3 DAY TRIP - SOUTHERN SITES OF SAVANNAH

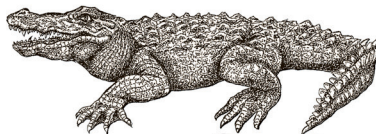
5th - 12th Grade **History of Savannah**

Departing early, we board our air-conditioned coach and head north, stopping for breakfast along the way. As we make our way across the Florida border to beautiful and historic Savannah, Georgia, our six-hour journey ends with spectacular views of the saltwater marsh ecosystem as we enjoy lunch at the Crab Shack. A local favorite, the restaurant is poised on stilts and offers us an opportunity to survey the wildlife of this natural area. After lunch, we head into town to explore two of Savannah's many historic buildings. At our first stop, the Jepson Center for the Arts, the future meets the past as we explore the arts place in the world over three floors of interactive exhibits. After honing our critical thinking skills, we'll head to the historic Owens-Thompson House and explore the lavish home and gardens built by one of Savannah's first cotton merchants in 1819. After checking in to the Historic Savannah Doubletree Hotel, we'll set out to stroll along the riverfront where we find an open market with local vendors to explore. After dinner, we join our guide for a walking ghost tour of the legendary streets and shadowy squares of what locals claim is one of the most haunted cities in America!

After breakfast, we get acquainted with Savannah's unique network of streets and squares on our walking tour of the city. Planned and built by Ogelthorpe in the 1800s, Savannah was the first city of it's kind in this area. Our morning offers us a chance to explore many of the cities important sites including the Savannah History Museum and the Roundhouse Railroad Museum. The Civil Rights Museum explores the history of Georgia's oldest African American community and their settlement in Savannah. We visit the First African Baptist Church and then move on to discover another early cultural settlement in the city. Visiting the historic Mickva synagogue, established in 1735 and housing a 200-year old torah, we learn of the largest group of early Jewish colonists who, five months after Savannah was first settled, administered to the health needs of the city. After lunch, we discover two historic landmarks, the Juliette Gordon Low birthplace where we learn the family story of this Girl Scout founder, and the Davenport House Museum which dates from the 1820s. Our day's exploring wraps up with a murder mystery dinner hosted by the professional actors of the Savannah Community Theater at the Pirate's House- a perfect end to our historic day.

CALL **954-772-7800** or E-MAIL info@BuildAFieldtrip.com

1925 NE 45th Street, Ste. 132, Fort Lauderdale, FL 33308



Build-A-Field Trip

A DIVISION OF FLORIDA SAFARI ADVENTURES

3 DAY TRIP - SOUTHERN SITES OF SAVANNAH

5th - 12th Grade **History of Savannah**

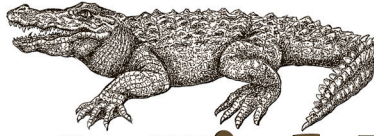
After breakfast, we head out to Old Fort Jackson, Georgia's oldest brick fort, where history comes alive while we watch how Civil War soldiers fired the forts cannons. For the fort, we head down the longest live oak driveway in the world to discover the ruins of Wormsloe, Savannah's legendary colonial estate. After a picnic lunch on the grounds, we say goodbye to the rich history and unique architecture of Savannah, Georgia. Arriving home after a dinner rest stop, we are full from our experience discovering one of our nation's most interesting cities!

PRICING:

- **\$650.00 per student**
- **Based on a minimum of 36 students and a maximum of 48 students**
- **Based on Broward county departure**
- **Includes coach transportation, instruction, equipment, lodging and meals**
- **Seasonal rates apply**

CALL **954-772-7800** or E-MAIL info@BuildAFieldtrip.com

1925 NE 45th Street, Ste. 132, Fort Lauderdale, FL 33308



Build-A-Field Trip

A DIVISION OF FLORIDA SAFARI ADVENTURES

3 DAY TRIP - SOUTHERN SITES OF SAVANNAH

EDUCATIONAL OBJECTIVES

Sunshine State Standards following Grades 5-12

Students will:

-investigate the history of slavery in the south and note the changes that have occurred as a result of the practice

SS.7.G.2.4: Describe current major cultural regions of North America.

SS.8.E.2.1: Analyze contributions of entrepreneurs, inventors, and other key individuals from various gender, social, and ethnic backgrounds in the development of the United States economy.

SS.8.E.2.3: Assess the role of Africans and other minority groups in the economic development of the United States.

SS.8.G.5.2: Describe the impact of human modifications on the physical environment and ecosystems of the United States throughout history.

SS.912.G.5.4: Analyze case studies of how humans impact the diversity and productivity of ecosystems.

-understand and appreciate the significance of preserved war time memorabilia

SS.8.G.2.1: Identify the physical elements and the human elements that define and differentiate regions as relevant to American history.

SS.912.W.1.6: Evaluate the role of history in shaping identity and character.

-understand the intersection between history and art through the use of historic buildings

SS.8.G.6.2: Illustrate places and events in U.S. history through the use of narratives and graphic representations.

SS.912.G.6.4: Translate narratives about places and events into graphic representations.

SS.912.H.1.1: Relate works in the arts (architecture, dance, music, theatre, and visual arts) of varying styles and genre according to the periods in which they were created.

SS.912.H.1.2: Describe how historical events, social context, and culture impact forms, techniques, and purposes of works in the arts, including the relationship between a government and its citizens.

SS.912.H.1.5: Examine artistic response to social issues and new ideas in various cultures.

SS.912.H.3.2: Identify social, moral, ethical, religious, and legal issues arising from technological and scientific developments, and examine their influence on works of arts within a culture.

-appreciate the significance of the African American contribution to the settlement of Savannah and Charleston

SS.6.W.1.5: Describe the roles of historians and recognize varying historical interpretations (historiography).

SS.6.W.1.6: Describe how history transmits culture and heritage and provides models of human character.

-explore the elements of a city that contributes to its unique character and significance in terms of American history

SS.7.G.2.3: Explain how major physical characteristics, natural resources, climate, and absolute and relative location have influenced settlement, economies, and inter-governmental relations in North America.

SS.8.G.2.2: Use geographic terms and tools to analyze case studies of regional issues in different parts of the United States that have had critical economic, physical, or political ramifications.

SS.8.G.3.1: Locate and describe in geographic terms the major ecosystems of the United States.

SS.912.G.2.1: Identify the physical characteristics and the human characteristics that define and differentiate regions.

SS.912.G.4.5: Use geographic terms and tools to analyze case studies of the development, growth, and changing nature of cities and urban centers.

-connect historical events, particularly those related to the Civil War, with specific locations

SS.6.W.1.1: Use timelines to identify chronological order of historical events.

SS.8.G.5.1: Describe human dependence on the physical environment and natural resources to satisfy basic needs in local environments in the United States.

SS.912.G.2.4: Use geographic terms and tools to analyze case studies of how selected regions change over time.

CALL **954-772-7800** or E-MAIL **info@BuildAFieldtrip.com**

1925 NE 45th Street, Ste. 132, Fort Lauderdale, FL 33308