

Build-A-Field Trip

A DIVISION OF FLORIDA SAFARI ADVENTURES

5 DAY TRIP - AN AMERICAN EXPERIENCE

4th - 12th Grade Charleston, South Carolina and Savannah, Georgia

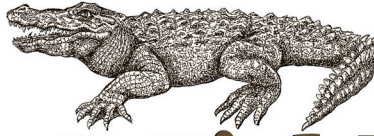


- Carriage Tour
- Drayton Hall
- USS Yorktown Aircraft Carrier
- First African Baptist Church
- Savannah History Museum
- Telfair Museum of Art



CALL 954-772-7800 or E-MAIL info@BuildAFieldtrip.com

1925 NE 45th Street, Ste. 132, Fort Lauderdale, FL 33308



Build-A-Field Trip

A DIVISION OF FLORIDA SAFARI ADVENTURES

5 DAY TRIP - AN AMERICAN EXPERIENCE

4th - 12th Grade **Charleston, South Carolina and Savannah, Georgia**

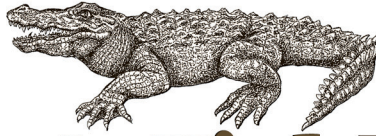
Departing early, we board our coach bus and head north, stopping for breakfast along the way. As we make our way across the Florida border, we travel through the tree-lined roads of Georgia, stopping for lunch on our journey to the fascinating historic coastal town of Charleston, South Carolina. After checking into our hotel, we enjoy dinner at a local restaurant and prepare for the next morning's adventure. After breakfast, a carriage tour of the city helps us survey the sights and soak up the history of the area. After the tour acquaints us, we delve deeper into the historic past, visiting the old exchange and market, together with the old slave mart. Following our local lunch, we will spend the afternoon exploring the buildings and grounds of Drayton Hall and Magnolia Plantation, experiencing the magnificence and unsettling realities of the past in the American South. After returning to town for dinner, the Bull Dog walking ghost tour rounds out a day filled with thoughts from the past and adventures in the present.

After a restful night's sleep, it's all aboard after breakfast! Spiritline Cruises will ferry us safely across Charleston harbor to explore Fort Sumter, the historic site of the first shots fired in the Civil War. Our historic military adventure continues as we enjoy lunch aboard the USS Yorktown aircraft carrier in the crew mess hall and tour Patriots Point Naval and Maritime Museum. The day ends with some much-needed relaxation and preparation for the next day's journey.

After breakfast, we leave fascinating Charleston and travel to beautiful and historic Savannah, Georgia. We get acquainted with Savannah's unique network of streets and squares on our trolley tour of the city. Planned and built by Ogelthorpe in the 1800s, Savannah was the first city of its kind in this area. Before a hearty lunch, we visit the First African Baptist Church, exploring the history of Georgia's oldest African American community and their settlement in Savannah. Our afternoon offers us a chance to explore many of the city's important sites including the Savannah History Museum, the Roundhouse Railroad Museum and Battlefield Park. After checking in to the historic Savannah Doubletree Hotel, we'll set out to stroll along the riverfront where we find an open market with local vendors to explore. After a delicious dinner at the Pirate's House restaurant, our day's exploring

CALL **954-772-7800** or E-MAIL info@BuildAFieldtrip.com

1925 NE 45th Street, Ste. 132, Fort Lauderdale, FL 33308



Build-A-Field Trip

A DIVISION OF FLORIDA SAFARI ADVENTURES

5 DAY TRIP - AN AMERICAN EXPERIENCE

4th - 12th Grade **Charleston, South Carolina and Savannah, Georgia**

wraps up with a trolley ghost tour of the legendary streets and shadowy squares of what locals claim is one of the most haunted cities in America - a perfect end to our historic day.

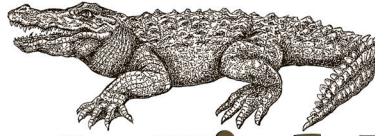
After breakfast, we set out to discover two historic landmarks, the Juliette Gordon Low birthplace, where we learn the family story of this Girl Scout founder, and the Telfair Museum of Art, where we are taken on a tour of this historic house. We say goodbye to the rich history and unique architecture of Savannah, Georgia with spectacular views of the saltwater marsh ecosystem as we enjoy lunch at the Crab Shack. A local favorite, the restaurant is poised on stilts and offers us an opportunity to survey the wildlife of this natural area. Arriving home after a dinner rest stop, we are full from our experience discovering the details of two of our nation's most interesting southern cities!

PRICING:

- **\$990.00 per student**
- **Based on a minimum of 36 students and a maximum of 48 students**
- **Based on Broward county departure**
- **Includes coach transportation, instruction, equipment, lodging and meals**

CALL **954-772-7800** or E-MAIL info@BuildAFieldtrip.com

1925 NE 45th Street, Ste. 132, Fort Lauderdale, FL 33308



Build-A-Field Trip

A DIVISION OF FLORIDA SAFARI ADVENTURES

5 DAY TRIP - AN AMERICAN EXPERIENCE

EDUCATIONAL OBJECTIVES

Sunshine State Standards following Grades 4-12

Students will:

-investigate the history of slavery in the south and note the changes that have occurred as a result of the practice

SS.7.G.2.4: Describe current major cultural regions of North America.

SS.8.E.2.1: Analyze contributions of entrepreneurs, inventors, and other key individuals from various gender, social, and ethnic backgrounds in the development of the United States economy.

SS.8.E.2.3: Assess the role of Africans and other minority groups in the economic development of the United States.

SS.8.G.5.2: Describe the impact of human modifications on the physical environment and ecosystems of the United States throughout history.

SS.912.G.5.4: Analyze case studies of how humans impact the diversity and productivity of ecosystems.

-understand and appreciate the significance of preserved war time memorabilia

SS.8.G.2.1: Identify the physical elements and the human elements that define and differentiate regions as relevant to American history.

SS.912.W.1.6: Evaluate the role of history in shaping identity and character.

-understand the intersection between history and art through the use of historic buildings

SS.8.G.6.2: Illustrate places and events in U.S. history through the use of narratives and graphic representations.

SS.912.G.6.4: Translate narratives about places and events into graphic representations.

SS.912.H.1.1: Relate works in the arts (architecture, dance, music, theatre, and visual arts) of varying styles and genre according to the periods in which they were created.

SS.912.H.1.2: Describe how historical events, social context, and culture impact forms, techniques, and purposes of works in the arts, including the relationship between a government and its citizens.

SS.912.H.1.5: Examine artistic response to social issues and new ideas in various cultures.

SS.912.H.3.2: Identify social, moral, ethical, religious, and legal issues arising from technological and scientific developments, and examine their influence on works of arts within a culture.

-appreciate the significance of the African American contribution to the settlement of Savannah and Charleston

SS.6.W.1.5: Describe the roles of historians and recognize varying historical interpretations (historiography).

SS.6.W.1.6: Describe how history transmits culture and heritage and provides models of human character.

-explore the elements of a city that contributes to its unique character and significance in terms of American history

SS.7.G.2.3: Explain how major physical characteristics, natural resources, climate, and absolute and relative location have influenced settlement, economies, and inter-governmental relations in North America.

SS.8.G.2.2: Use geographic terms and tools to analyze case studies of regional issues in different parts of the United States that have had critical economic, physical, or political ramifications.

SS.8.G.3.1: Locate and describe in geographic terms the major ecosystems of the United States.

SS.912.G.2.1: Identify the physical characteristics and the human characteristics that define and differentiate regions.

SS.912.G.4.5: Use geographic terms and tools to analyze case studies of the development, growth, and changing nature of cities and urban centers.

-connect historical events, particularly those related to the Civil War, with specific locations

SS.6.W.1.1: Use timelines to identify chronological order of historical events.

SS.8.G.5.1: Describe human dependence on the physical environment and natural resources to satisfy basic needs in local environments in the United States.

SS.912.G.2.4: Use geographic terms and tools to analyze case studies of how selected regions change over time.

CALL **954-772-7800** or E-MAIL **info@BuildAFieldtrip.com**

1925 NE 45th Street, Ste. 132, Fort Lauderdale, FL 33308